

Rochester Cathedral Word Search

| | | | | | | | | | | | | | | | | | | | |
|---|---|---|---|---|---|---|---|---|---|---|---|---|---|---|---|---|---|---|---|
| V | R | G | C | R | Y | P | T | C | T | F | D | W | N | L | H | X | C | P | S |
| C | H | A | P | E | L | D | G | B | Y | O | J | S | M | K | Y | L | A | C | H |
| H | S | J | E | B | Z | A | P | F | I | N | D | G | B | E | M | V | T | Y | P |
| O | Z | R | T | F | P | U | L | P | I | T | V | D | W | S | N | G | H | C | I |
| I | A | H | D | X | J | B | S | M | D | R | N | X | G | V | B | B | E | L | L |
| R | T | K | H | A | S | S | O | C | K | W | G | A | J | C | O | A | D | B | L |
| Y | T | O | P | A | F | H | X | R | B | A | M | I | V | Z | O | L | R | P | A |
| Q | H | A | L | T | A | R | D | O | N | V | D | S | N | E | K | P | A | T | R |
| S | B | R | E | H | T | U | L | S | S | N | R | L | O | F | P | W | C | J | F |
| T | R | C | J | V | F | R | E | S | C | O | D | E | S | G | C | Q | N | H | L |
| A | L | H | E | T | Y | N | O | M | D | H | S | T | N | P | S | B | Z | L | A |
| I | P | R | L | E | C | T | E | R | N | S | U | Q | B | X | U | J | D | A | D |
| N | E | G | H | A | J | X | B | K | W | C | V | N | U | P | S | E | D | K | Y |
| E | Z | S | G | R | E | E | N | M | A | N | C | P | R | I | E | S | T | W | C |
| D | M | E | C | H | A | V | I | X | A | O | S | J | W | H | J | L | Y | U | H |
| G | O | G | S | H | T | B | N | I | D | R | G | J | Y | A | I | N | B | E | A |
| L | V | L | R | T | D | E | V | N | J | W | Y | M | X | D | G | E | I | O | P |
| A | W | G | D | B | Q | U | I | R | E | Y | N | D | I | P | A | N | B | C | E |
| S | P | E | Y | X | P | G | O | D | F | C | A | J | S | Z | M | R | L | N | L |
| S | T | A | T | U | E | T | Y | D | V | N | P | C | A | N | D | L | E | P | O |

The words you are looking for - and their meanings

God - Christians believe in God and come to church to pray to God

Jesus - Jesus is the Son of God

Mary - Mary is the Mother of Jesus

Crypt - an underground part of the cathedral where Monks used to have some of their services

Pulpit - the pulpit is a small tower (often wooden) where the priest can be seen and heard

Aisle - the aisle is a passage way between the chairs

Altar - the table where the priest blesses the bread + wine at the Communion / Eucharist service

Chapel - a chapel is a room for prayers and services in a big church or cathedral

Lady Chapel - the Lady Chapel is a chapel where people particularly think about Mary

Pillar - the cathedral is held up by the pillars

Arch - the arches are the curves between the pillars

Candle - candles are often lit during services and when people pray

Font - the font is where people are baptised (christened)

Cathedra - this is the Bishop's throne - the reason why this church is called a cathedral

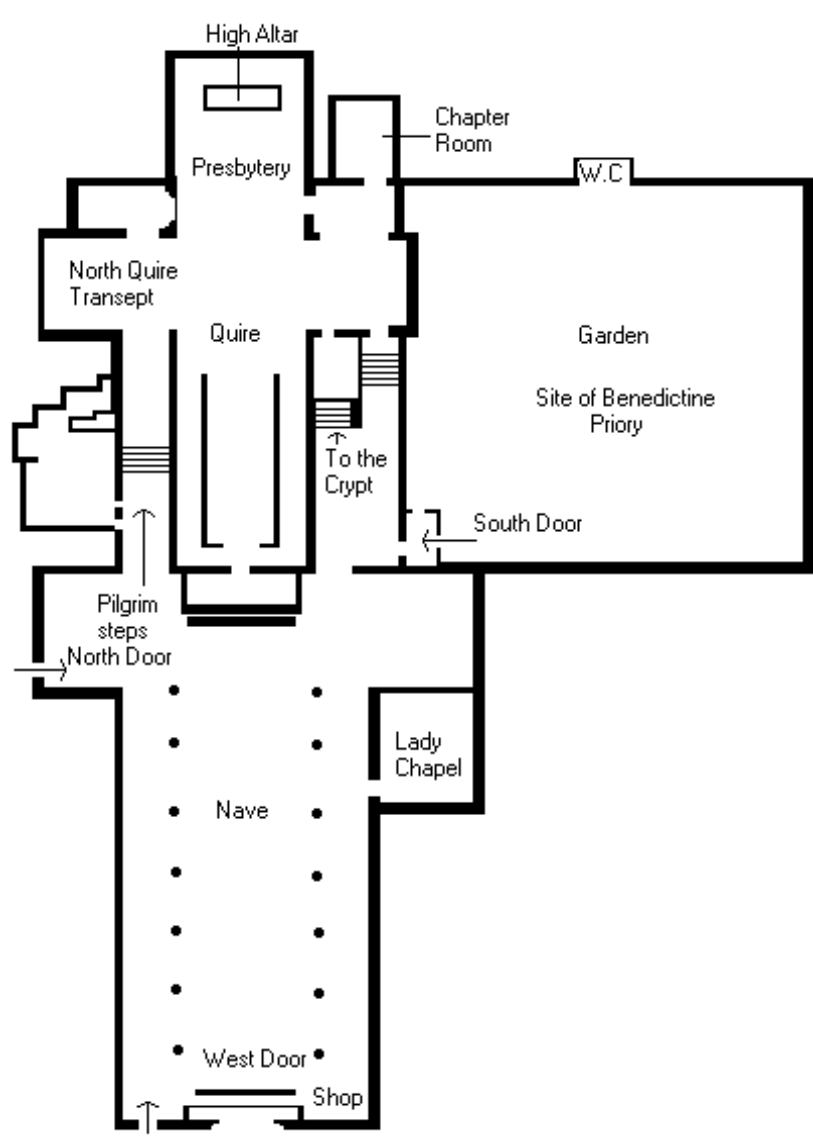
Cross - the cross reminds us of Jesus' death on the cross to save mankind

Statue - there are often statues of Jesus, Mary and important saints in churches

Hassock - hassocks are small cushions for kneeling

Stained Glass - stories about Jesus and the saints are shown in stained glass windows
 Nave - the nave is the main part of the cathedral, the biggest "room"
 Fresco - a fresco is a picture painted on the wall (on wet "fresh" plaster)
 Quire - the quire is where the choir sits to sing at services
 Choir - the choir sings beautiful music during services
 Lectern - the lectern is a bookstand for the bible
 Bible - the bible is the book of the Christian story
 Priest - the priest is the person who leads the services
 Green men - the green men are a very old symbol meaning new life
 Bell - bells ring in churches to call people to prayer

Now use this plan to try and find some of the things you have marked on the previous page



Well done. There are lots of other trails for you to try at Rochester Cathedral. Do come and see us again another time.